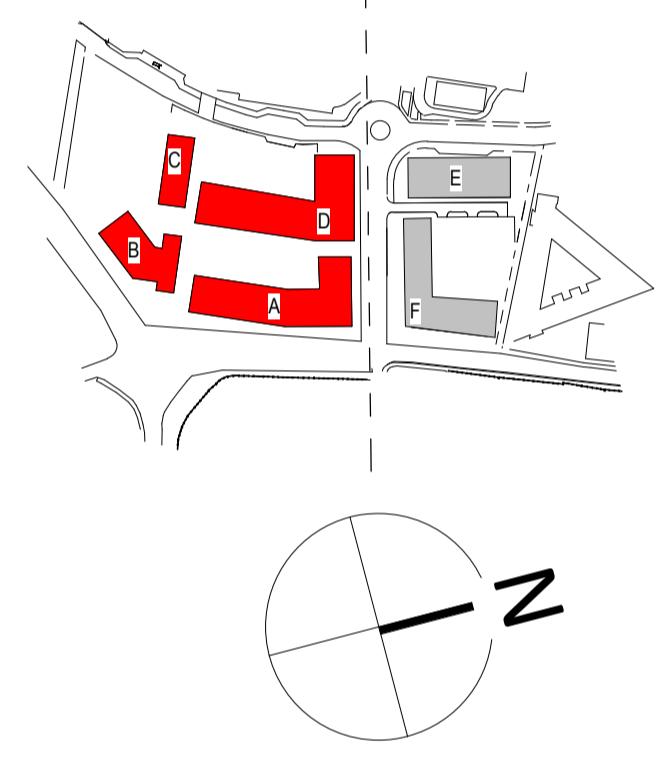


Future District Centre Use Site.
Subject to Future Planning
Application.



Notes:
DO NOT SCALE FROM THIS DRAWING. USE FIGURED DIMENSIONS IN ALL CASES. VERIFY DIMENSIONS ON SITE AND REPORT ANY DISCREPANCIES TO THE ARCHITECTS IMMEDIATELY. THIS DRAWING TO BE READ IN CONJUNCTION WITH THE ARCHITECTS SPECIFICATION. © THIS DRAWING IS COPYRIGHT AND MAY ONLY BE REPRODUCED WITH THE ARCHITECTS PERMISSION.

- Drawing Notes:
- Unit Types Key**
- 1 BED UNIT
 - 2 BED UNIT
 - 3 BED UNIT
 - BIKE STORE
 - BINS
 - CINEMA
 - COMMUNITY USE
 - MAINTENANCE
 - RESIDENTIAL AMENITY
 - RETAIL
 - RETAIL / F&B
 - SERVICES



A	OCT 2019	OM	STAGE 3 APPLICATION
Rev	Date	DRN	Description
Reddy Architecture + Urbanism Dairy Mills, Dairy Road, Dublin 6, D06 Y0E3. T: +353 (0)1 4987000 W: www.reddyarchitecture.com E: info@reddyarchitecture.com			

Client Details:
GLENVEAGH LIVING

Project Details:
**KNOCKNACARRA DISTRICT CENTRE,
RAHOON, GALWAY.**

Drawing Title:
GA Plan Level 03 Block A_B_C_D

Job No P18-179	Date OCT 19	Scale@A1 1:200
Status FOR PLANNING	Drawn By: O. MORGAN	
Purpose PLANNING PERMISSION	Checked By: M. FREANEY	
Drawing Number P18179-RAU-ZZ-XX-DR-A-SLP-7003	Revision A	

1 Floor Plan Level 03 Block A_B_C_D
1 : 200

MATCHLINE DRG. REFERENCE: P18179-RAU-ZZ-XX-DR-A-SLP-7103